

Community Safety Project Update.

The City of London Corporation and the City of London Police will, through this Community Safety project, explore opportunities to improve accessibility to and accountability for community safety related services within the geographical area of the 'Square Mile'. This will include the identification of opportunities to deliver earlier intervention and prevention across both organisations with the most efficient use of skills, resources and systems. These efficiencies will be explored and implemented through increased collaboration between teams, through improved processes and systems and, where appropriate, the co-location of teams.

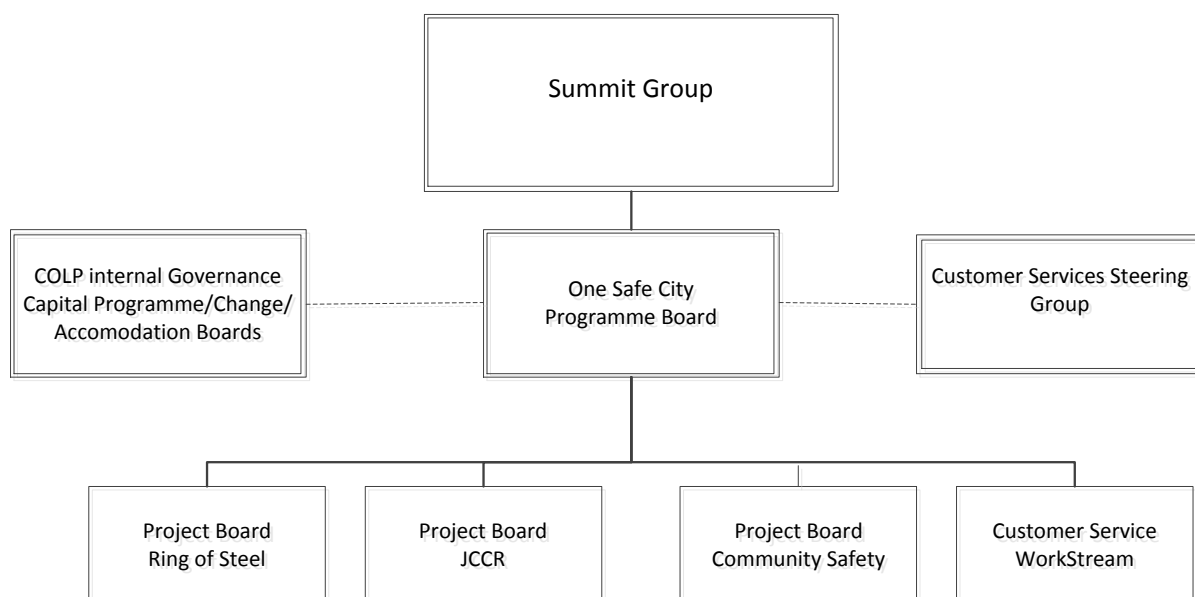
Vision - The Community Safety project will provide an efficient collaborative response to the needs of our customers and communities in safeguarding a world class city.

One Safe City Programme Board

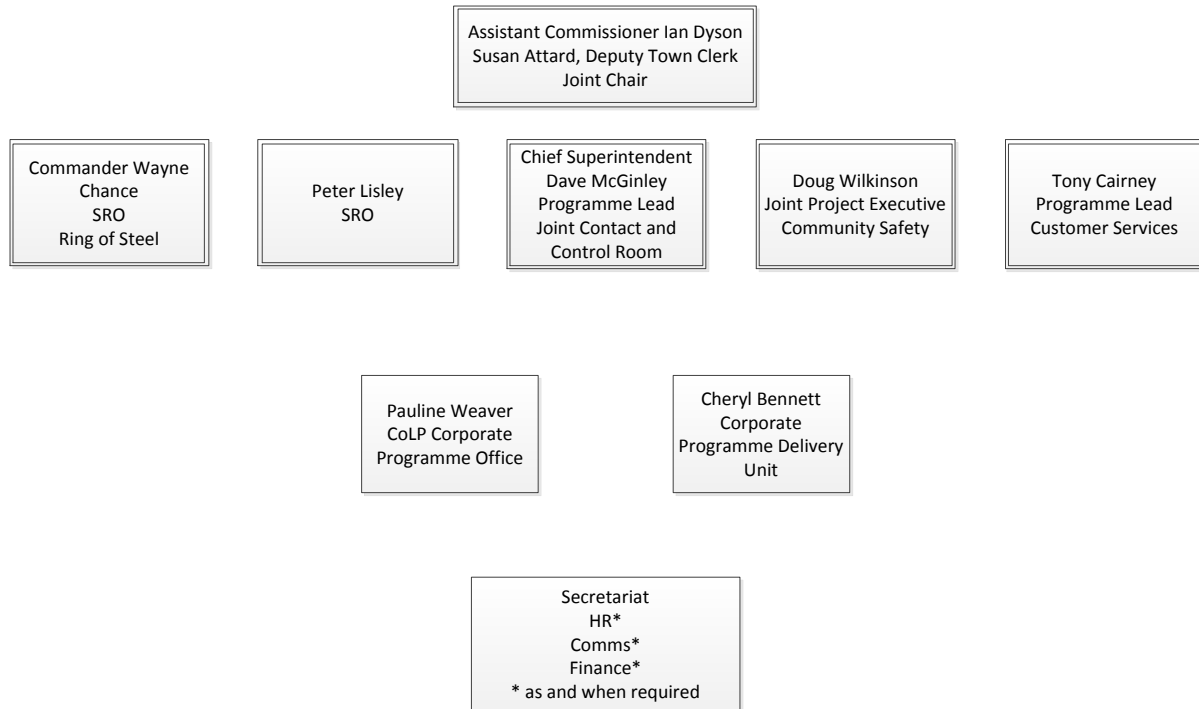
The Community Safety Project is one of a number of projects currently being delivered within a joint corporate programme branded 'One Safe City'. The One Safe City Programme Board providing the governance framework. The objectives of the OSC programme board are;

- To provide strategic direction and oversight for key collaborative projects/initiatives that make up the programme; initially the Ring of Steel, Joint Contact and Control Room, Community Safety and Customer Services projects
- Agree any future joint collaborative projects
- To ensure the programme demonstrates a coordinated approach to customer service and community safety
- Ensure that opportunities for collaboration are maximised for the mutual benefit of both parts of the organisation

One Safe City Governance Structure



Programme Board Membership



Initial scope of the Community Safety project agreed

- Community Safety team/ Community Policing,
- People Services/ Public Protection Unit,
- Road Safety Team/ Roads Policing,
- Security & Contingency Planning and Events/ CoLP Emergency Planning, Business Continuity and Events Planning.

Update on progress

To prioritise the project's resources, initially focus will be on Community Policing/ Community Safety Team and Road Safety/ Safer Transport Ops Team.

Vulnerable People/ PPU have just been subject to a mock inspection and a subsequent independent review looking at the appropriateness of MASH (Multi Agency Safeguarding Hub) model for the City. The report's recommendations will assist this project in how to best deliver improved ways of working.

The Resilience team/ Emergency Planning and Ops Planning are currently implementing the recommendations of the independent service review with the Project Board overseeing and providing guidance to ensure the objectives of the project are also achieved.

Community Policing/ Community Safety Team

- Community Policing, the Street Intervention team have moved and co-located with the Community Safety team into Guildhall accommodation.

- Working with I.T. to resolve system and security issues from Guildhall. Unifi and other systems are available via VPN/ Wi-Fi connection.
- Working environment assessment undertaken by CTSA with appropriate measures being put in place to meet the recommendations.
- Business Analysis: workshop to discuss and understand current key activities undertaken by CoLP Community Engagement Team; workshop with CoL Community Safety Team key activities and functions; and the initiation of a review and analysis of information gathered during the workshop. This work is to enable the Business Analyst to further his understanding of the current operation and interaction between CoLP community engagement and CoL Community safety team, which will ultimately define the target operation and interaction between the two teams
- Visited Nottingham City Council where the council and Nottinghamshire Police have 'fully integrated' a number of functions through co-location etc. initial findings were very positive.
- Ensure that the necessary accommodation/physical space checklist is adhered to and in line with wider accommodation strategy.